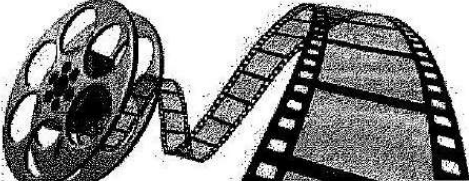


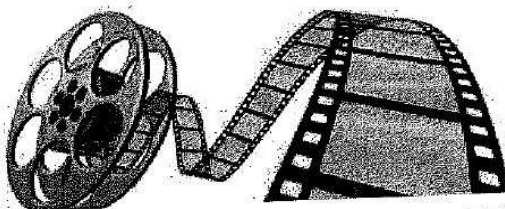
Pupil B – Piece A: a film review

Context: pupils watched the short, animated film 'Alma'. They studied a range of film reviews and then wrote their own, having opportunities to edit and revise their work before finally publishing it. A series of images from the film have been removed from the right-hand side of both texts.

<h1>Alma</h1> <h2>Film Review</h2> 	
<p>Viewers are initially presented with a vast cityscape: pearl-white snow and gushing wind, accompanied by music from a tinkling piano, reassures the audience, leading them to believe that this is an everyday animation of playfulness and adventure, when in reality, it is anything but. The camera pans down into the narrow street, making viewers feel claustrophobic. The audience feel a hint of danger for the first time.</p>	
<p>When audiences first watch the film, they bypass the "missing" posters on the wall, and the ominous, mouth-shaped window. As the camera pans on round facing the window, it captures the girl's form in its reflection, looking almost as if it had already swallowed Alma.</p>	
<p>As Alma crosses the division</p>	

Alma

Film Review



between the two very different worlds, audiences can see how the director plays with the colour to emphasise the two very opposite worlds: light for Alma; dark for the doll. The music becomes unsettling as Alma realises the resemblance between the doll and herself. The juxtaposition between Alma and the doll emphasises the difference between the words 'life' and 'lifeless'.